



The 2020 Vision Rogaine

7 March 2020

6 Hours 3:00pm to 9:00pm

Western Australian Rogaining Association Inc.
wa.rogaine.asn.au

Emergency contact
Satellite Phone +881 622 449 700

Controls used : 39

Points total : 2350

Sunset : 6:43pm

Moon Rise : 5:17pm

Setters & Vettors

Paul Szijarto
Jim Langford
Colin Kelly
John Najjar

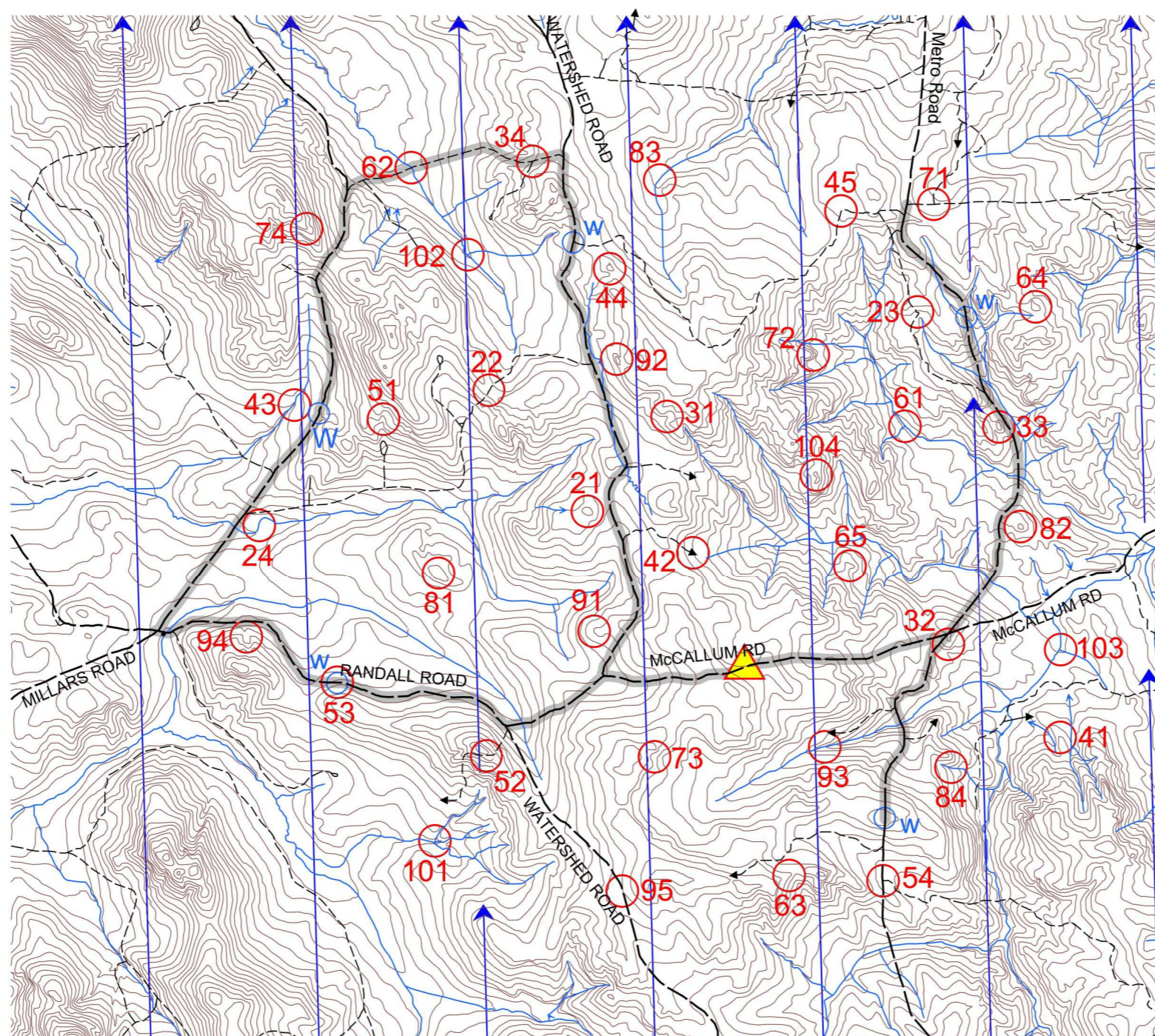
LEGEND

- Building
- Continuation
- Contours
- Control
- Dam
- Fence
- Hash House
- Magnetic North Line
- Out of Bounds
- Patrolled Road
- Powerline
- Road, Major Gravel
- Track
- Watercourse
- Water Drop

SCALE 1:50,000 – 5 metre contour interval



This map was produced using Open Orienteering Mapper using data supplied by Landgate, used under copy licence 393/93. Possession of this map does not give right of entry to this area.



WARA acknowledges the Traditional Owners of the Land we are rogaining on today and would like to pay our respects to Elders past and present



Department of
Local Government, Sport
and Cultural Industries

**In case of injury or illness you should make your way to a drink stop or a patrolled road.
Wait there for help to arrive.**

**In an emergency six blasts on your whistle should be used.
All participants must respond to such a call.**

The State Government through the Department of Local Government, Sport and Cultural Industries is a major supporter of Rogaining in WA. Sport and recreation builds stronger, healthier, happier and safer communities.

2020 Vision Six Hour Rogaine- 7 March 2020

No	Description	Pts
21	The knoll	20
22	The track	20
23	The track bend	20
24	The watercourse	20
31	The gully	30
32	The spur	30
33	The knoll	30
34	The track junction	30
41	The spur	40
42	The track	40
43	The watercourse	40
44	The knoll	40
45	The track bend	40
51	The gully	50
52	The track	50
53	The road	50
54	The track junction	50
61	The watercourse junction	60
62	The track/creek crossing	60
63	The spur	60

No	Description	Pts
64	The knoll	60
65	The spur	60
71	The track junction	70
72	The spur	70
73	The gully	70
74	The spur	70
81	The knoll	80
82	The knoll	80
83	The watercourse bend	80
84	The gully	80
91	The spur	90
92	The knoll	90
93	The watercourse	90
94	The gully	90
95	The road	90
101	The watercourse junction	100
102	The watercourse junction	100
103	The watercourse	100
104	The knoll	100

Event Information
Start: 3:00pm Saturday
Finish: 9:00pm Saturday
Sunset: 6:43pm
Moonrise: 5:17pm
Late penalty: 10 points per minute or part minute LATE (no points) after 9:30pm
Controls used: 39
Total points: 2350
There are 5 water drops Indicated by a blue circle and a W

If a team member becomes sick or injured please make your way to a water drop or to a patrolled road as indicated on the map